



**ENERGY EFFICIENT  
CONSTRUCTION**

**We will engineer and design  
your dream Passive House**



**ENERGY EFFICIENT  
CONSTRUCTION**

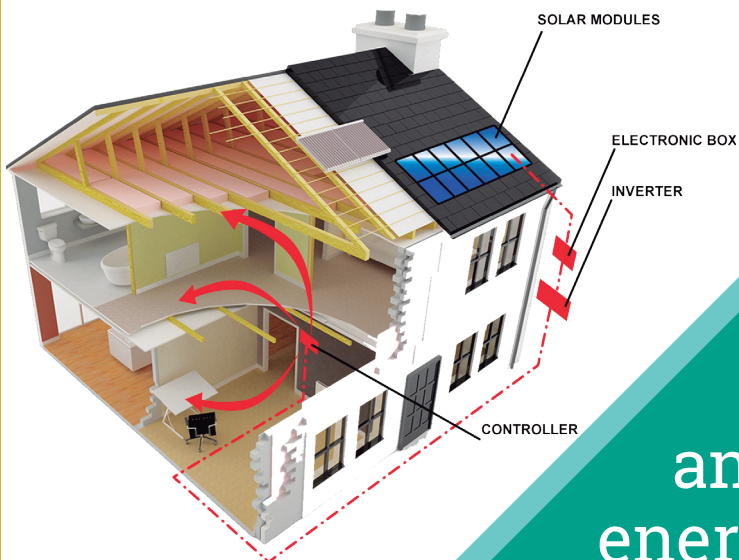
**ENERGY REDUCTION EVALUATION**

**ENERGY EFFICIENCY RETROFIT**

**ENERGY MANAGEMENT**

[www.eplusbuildings.com](http://www.eplusbuildings.com)





Because we care about you saving money and living healthy, and care about the environment, our legacy and our future, we make energy efficient buildings.

## Passive House Consulting Services



### ENERGY MODELING

Design phase energy modeling utilizing the PHPP (Passive House Planning Package) to optimize structures assemblies and mechanical equipment in order to minimize energy intensity.



### THERMAL BRIDGE CALCULATIONS

Utilizing THERM and WUFI PLUS thermal bridge potential can be evaluated and condensation potential for mold formation can be determined to prevent occupants' health hazards and structural deterioration.



### SOLAR SHADING ANALYSIS

Utilizing the Solar Pathfinder an analysis of solar shading can be implemented to assess solar gains required for the PHPP energy modeling.



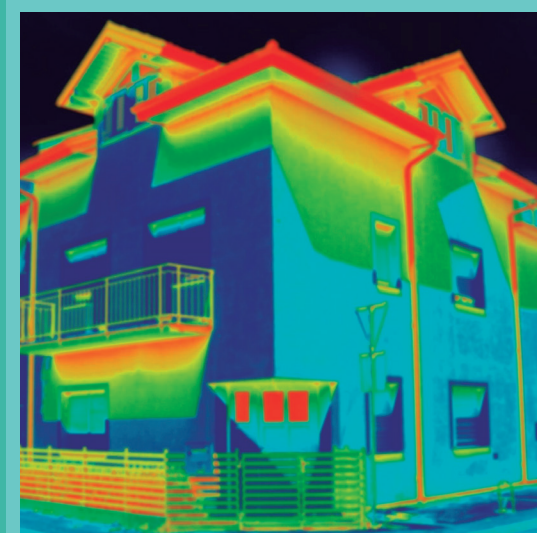
### LEAN CONSTRUCTION AND INTEGRATED PROJECT DELIVERY IMPLEMENTATION

Coordination of design/build team effort and prefabricated components to optimize project development/delivery at or below market cost.



### CERTIFICATION OF A PROJECT WITH PHI OR PHIUS

Precertification work and certification filing documentation, with Passive House Institute – Germany or Passive House Institute US for project certification.



We work to maximize energy savings while meeting the client's specific requirements. We will engineer and design the project to include multiple conservation measures and to account for interactions among the installed components.

## ENERGY EFFICIENCY RETROFIT

Implementing an energy efficiency retrofit project that pays for itself through energy savings can be a complex undertaking. E Plus Buildings has extensive design and implementation experience in integrating multiple efficiency measures, mitigating technical and performance risks and providing a financial target so that the energy savings generated will cover the investment.

### SAVE MONEY



Energy costs will continue to increase over time so less energy use will translate into lower bills.

### INCREASE YOUR PROPERTY VALUE



Energy costs are an intricate part of owning a home and any work that will decrease energy costs will make your property more desirable.

### BETTER INDOOR AIR QUALITY



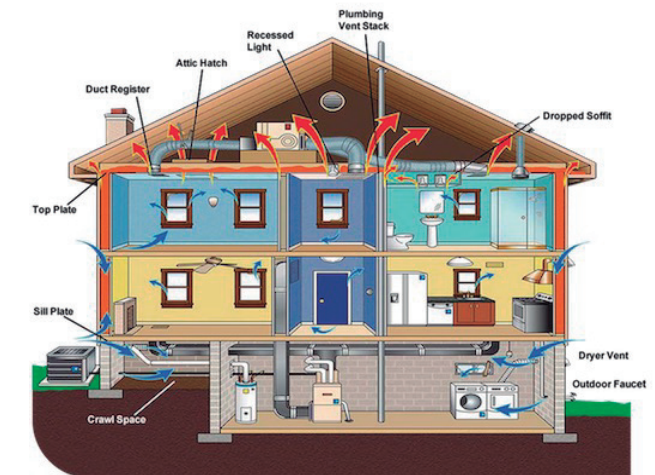
Through air sealing, moisture managing and balanced ventilation in the building, you reduce allergens, dust, and mold.

### INCREASE COMFORT AND IMPROVE PERFORMANCE



When the building envelope is properly insulated and sealed, temperature differences are reduced eliminating drafts, providing a more homogenous temperature throughout the conditioned space and optimizing performance.

## ENERGY REDUCTION EVALUATION



## ENERGY MANAGEMENT

### ENERGY MANAGEMENT

- ✓ Seal leaks.
- ✓ Adjust exterior shading.
- ✓ Install insulation.
- ✓ Properly maintain units.
- ✓ Reduce heating and cooling loads.
- ✓ Evaluate the entire mechanical system.

### LIGHTING

- ✓ Install CFLs and LEDs.

### HOT WATER

- ✓ Solar Domestic Hot Water implementation.
- ✓ Conserve water resources.
- ✓ Insulate hot water pipes and tank.